

Issue Date:  
Thursday, 11 October 2018

Armacup Japan K.K.  
Meikai Kyobashi Building, 5th Floor  
2-18-2 Kyobashi, Chuo-ku,  
Tokyo 104-0031  
Tel: (03) 3537-1121  
Fax: (03) 3537 1123  
Email: [armacup@armacup.co.jp](mailto:armacup@armacup.co.jp)  
[www.armacup.co.jp](http://www.armacup.co.jp)



Managing Agents:

Armacup Maritime Services Limited  
Level 5 Harbour View Building  
152 Quay Street, Auckland 1143,  
New Zealand  
Tel: +64 9 303 3314  
Fax: +64 9 309 6354  
Email: [enquiries@armacup.co.nz](mailto:enquiries@armacup.co.nz)  
[www.armacup.com](http://www.armacup.com)



## SPECIALISTS IN RORO, VEHICLE & PROJECT CARGOES

### ASIA to OCEANIA

	VESEL NAME:	CARRERA	LAKE TAUPO	SEPANG EXPRESS	TRIUMPH	VIKING AMBER	CARRERA	LAKE TAUPO
	VOYAGE NUMBER:	V1818	V1819	V1860	V1820	V1861	V1821	V1822
	Call Sign:	2AGI2	D5EZ7	3ECL8	D5EZ8	9V7985	2AGI2	D5EZ7
CHINA	SHANGHAI TIANJIN (XINGANG)	10/Sep 12/Sep	27/Sep		7/Oct 11/Oct		26/Oct	7/Nov 10/Nov
KOREA	PYEONGTAEK MOKPO MASAN ULSAN	15/Sep	29/Sep 30/Sep 1/Oct		14/Oct	15/Oct	28/Oct 29/Oct 31/Oct	12/Nov
JAPAN	MOJI OSAKA NAGOYA TOYOHASHI YOKOHAMA	17/Sep 18/Sep	4/Oct Omit-OSAKA Omit-OSAKA	6/Oct 7/Oct 8/Oct	15/Oct 16/Oct 17/Oct 18/Oct Omit-Nagoya	17/Oct 18/Oct 19/Oct	2/Nov 3/Nov 4/Nov	14/Nov 15/Nov 16/Nov 17/Nov 18/Nov
AUSTRALIA	BRISBANE PORT KEMBLA MELBOURNE ADELAID FREMANTLE	29/Sep 1/Oct 13/Oct 15/Oct 19/Oct	16/Oct 29/Oct 31/Oct 5/Nov		30/Oct 1/Nov 14/Nov 17/Nov 21/Nov		15/Nov 24/Nov 26/Nov 1/Dec	29/Nov 2/Dec 13/Dec 15/Dec 20/Dec
NEW ZEALAND	AUCKLAND WELLINGTON LYTTELTON NELSON	7/Oct 11/Oct 10/Oct 15/Oct	20/Oct 29/Oct 27/Oct 29/Oct	22/Oct 29/Oct 27/Oct 29/Oct	6/Nov 10/Nov 9/Nov 13/Nov	2/Nov 9/Nov 8/Nov 13/Nov	20/Nov 26/Nov 24/Nov 26/Nov	6/Dec 10/Dec 9/Dec 14/Dec
SOUTH PACIFIC	NOUMEA SUVA PAPEETE APIA NUKU'ALOFA	15/Oct 28/Oct 14/Oct 11/Oct	28/Oct 29/Oct 26/Oct	26/Oct 13/Nov 12/Nov 9/Nov	14/Nov 13/Nov 28/Nov 25/Nov	13/Nov 13/Nov 12/Nov 9/Nov	25/Nov 29/Nov 28/Nov 25/Nov	14/Dec 15/Dec 14/Dec 11/Dec

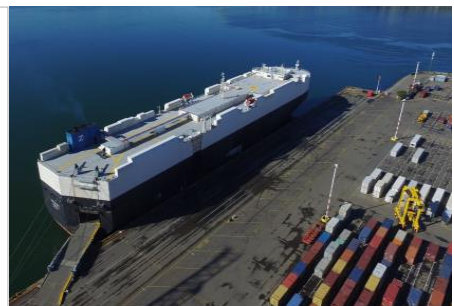
\*\* For NELSON - Please inquire the freight rate / Dates in bold indicate direct port calls - Schedules are subject to change without prior notice

Rate of Exchange to apply:	JPY/USD:	111.11	112.24	112.24	113.97	113.97	TBA	TBA
	JPY/NZD:	73.35	73.92	73.92	75.32	75.32	TBA	TBA

Ramp Capacity:	120 ton	120 ton	120 ton	120 ton	120 ton	120 ton	120 ton	120 ton
Door Height:	5.30 m	5.30 m	5.30 m	5.30 m	5.30 m	5.30 m	5.30 m	5.30 m

OTHER SOUTH PACIFIC DESTINATIONS CAN BE OFFERED THROUGH OUR FEEDER NETWORK

Tokyo:	For Bookings & Documentation:	Armacup Japan K.K.	Ph: 03 -3537-1121 Fax: 03 -3537-1123
Yokohama:	For Bookings:	Keihin	Ph: 045-500-1220 Fax: 045-500-1235
	For Documentation:	Keihin	Ph: 045-500-1231 Fax: 045-500-1235
Nagoya:	For Bookings & Documentation	Silver Shipping	Ph: 052-586-1286 Fax: 052-561-1768
Osaka:	For Bookings:	Fujiwara	Ph: 0725-33-3747 Fax: 0725-33-3797
	For Documentation:	Kamigumi	Ph: 06-6613-1896 Fax: 06-6572-3416
Kobe:	For Bookings & Documentation:	Kamigumi	Ph: 078-306-3908 Fax: 078-306-3925
Moji:	For Booking s & Documentation:	Geneq Corporation	Ph: 093-331-3456 Fax: 093-332-4818



WE OFFER THE CHOICE OF  
MPI, LTSA INSPECTIONS &  
ODOMETER VERIFICATION IN JAPAN

S/O CUT OFF: 3 WORKING DAYS BEFORE ARRIVAL

Rate of Exchange  
Armacup applies Reuter's practical rate, not including any bank commission.

Driving the Pacific for over 25 years.....

[WWW.ARMACUP.CO.JP](http://WWW.ARMACUP.CO.JP)